

1. First of all, what is a Pap test?

The Pap test, or Pap smear, is a screening test that has been very successful at finding signs of cervical cancer, or cells that may turn into cancer cells in the future. To do the test, your doctor gently scrapes cells from your uterine cervix, then sends the cells to a laboratory for review. The test allows laboratory professionals to spot early signs of cancer so that, if any are found, you can be treated before the disease actually develops.

2. Is there room for improvement with the Pap smear?

The Pap smear is a good test for detecting most cases of cervical cancer. In fact, in the last 50 years, it has helped reduce the number of cervical cancer deaths from 35,000 a year to less than 5,000 today. But, like any procedure that has been around for so long, there are certain aspects of the test that today's technology can improve upon.

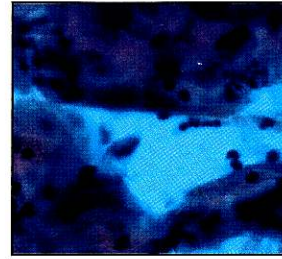
3. Why should I ask for the ThinPrep® Pap Test™?

Because it is the first real improvement to the Pap smear in 50 years. While the doctor will still collect the cervical cells from you in the same way, it's the way the cells are delivered to the laboratory that makes the ThinPrep Pap Test so different. As a result, the lab can process a higher quality slide to read.

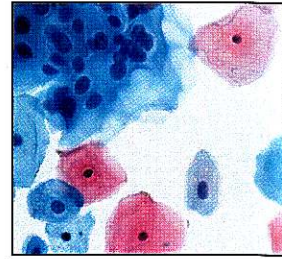
4. How is the ThinPrep Pap Test different?

Once your cells have been taken, the doctor rinses them into a vial of liquid instead of smearing them onto a slide. Because the cells aren't "smeared," they don't clump together. This method also allows the doctor to preserve almost all of the sample, rather than just a portion.

The vial is then sent to the laboratory, where a machine separates the cells from unnecessary material, such as blood and mucus. The remaining, important cells are then placed onto a slide in a clear and uncrowded way. This approach makes the ThinPrep slide easier for the lab to read.



With the old Pap smear, cells on the slide can be difficult to read.



With the ThinPrep Pap Test, slides are clearer.

5. Is there proof that the ThinPrep Pap Test is more effective?

Studies involving thousands of women have proven the ThinPrep Pap Test increased detection of precancerous cells.

6. If I feel fine, do I still need a Pap test?

Yes. Even though you may feel fine, you should still have Pap tests on a regular basis. That way, any problems can be caught and treated early on – before they become serious.

7. What if my test results say I may have a problem?

There is always that fear, but it shouldn't stop you from getting the test. Most Pap test results are normal. However, should there be a problem, your doctor can follow up immediately with whatever treatment is best for you. It's important to remember that, if detected early, cervical cancer is almost 100% curable. That's why it's important to get routine exams.

8. Will my insurance pay for the ThinPrep Pap Test?

Many insurers do cover the ThinPrep Pap Test, but health-care plans vary across the country. The best thing to do is to check with your insurer to make sure.

9. How can I get the ThinPrep Pap Test?

That's the easiest part of all. Just ask your doctor or healthcare provider.